

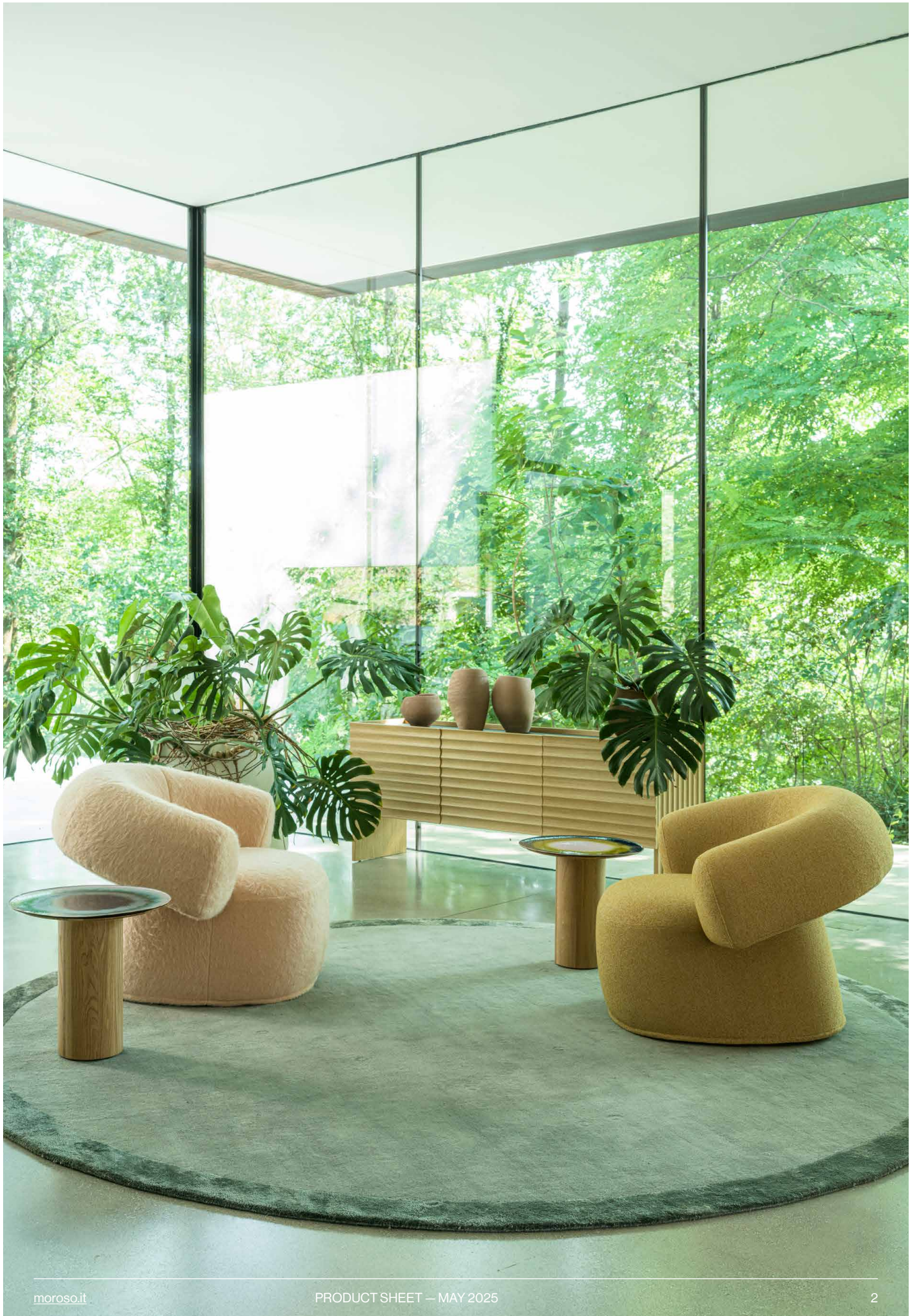


## **RUFF**

Patricia Urquiola, 2020-2024

Ruff plays on the design of geometry: a harmonious and successful interweaving of seat and back.

The dialogue between forms is sculptural when referring to volumes, architectural when relating to the surrounding space; a functional form that does not forget that it is an object inhabiting a place.



**TECHNICAL INFORMATION**

**ARMCHAIR**

BACKSEAT STRUCTURE

Cold-injected polyurethane foam with internal steel frame.

SEAT STRUCTURE

Cold-injected polyurethane foam with internal steel frame and webbed seat. Transparent PVC glides screwed to the structure.

SEAT HEIGHT

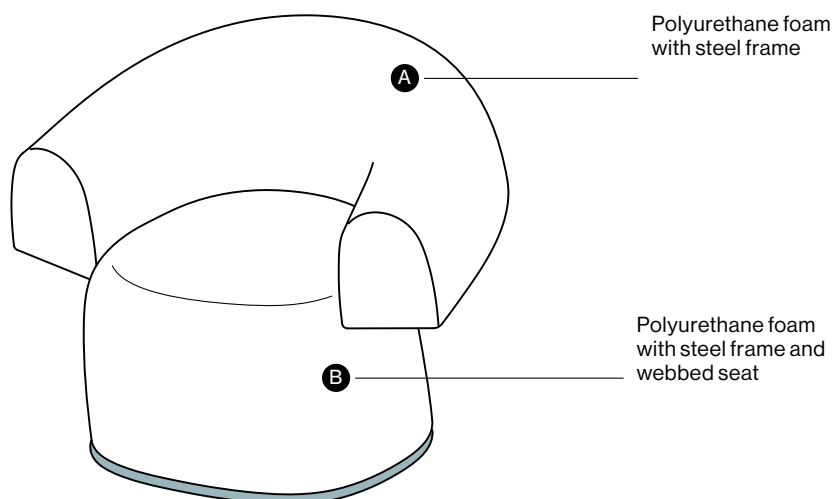
Without applied load: 43 cm.

OPTIONS

In the swivel version, the base is made of steel painted in black, RAL 9005.

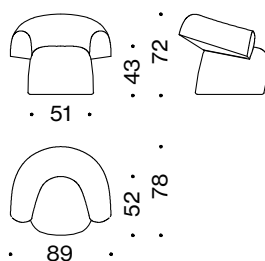
UPHOLSTERY

The Ruff collection covers are not removable. For the recommended fabrics see the table on pages 4-7.



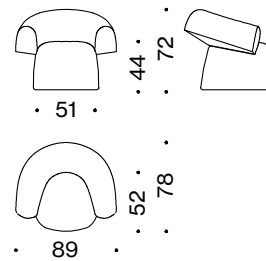
**RU0061**

Armchair



**RU00V8**

Swivel armchair

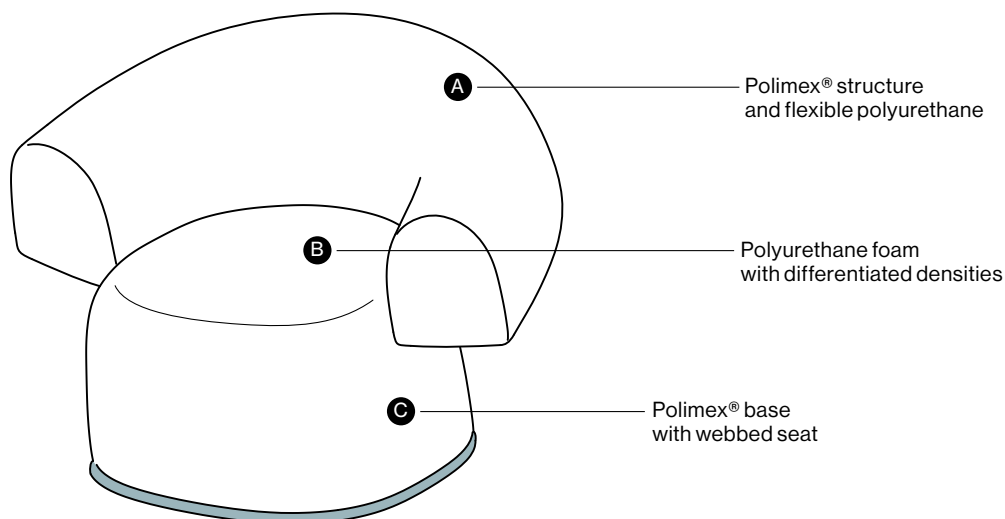


Moroso reserves the right to modify any design and change any technical specifications of any product at any time without prior notice. The drawings do not define the product details; the dimensions reported are indicative and may be subject to change.

**TECHNICAL INFORMATION**

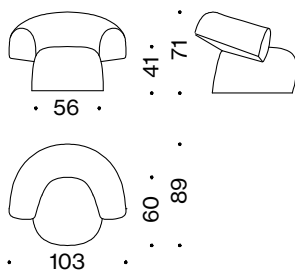
**LARGE ARMCHAIR**

BACKSEAT STRUCTURE	Polimex® structure and flexible polyurethane with differentiated densities.
SEAT STRUCTURE	Polimex® base with webbed seat and differentiated-density polyurethane foam padding.
SEAT HEIGHT	Without applied load: 41 cm
OPTIONS	In the swivel version, the base is made of steel painted in black, RAL 9005.
UPHOLSTERY	The Ruff collection covers are not removable. For the recommended fabrics see the table on pages 4-7.



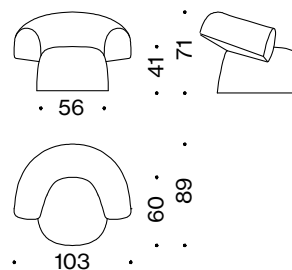
**RU002Q**

Large armchair



**RU00EQ**

Swivel large armchair



Moroso reserves the right to modify any design and change any technical specifications of any product at any time without prior notice. The drawings do not define the product details; the dimensions reported are indicative and may be subject to change.

USAGE CATEGORIES

**S Soft Use**  
 cosy and natural, with limited wear resistance

**DASDIA** bouclé  
**DRIPPING** chenille  
**FERAL** peluche  
**FURY** chenille  
**GORKY** bouclé  
**LHATI** chenille  
**SAMOIEDO** chenille  
**TRONO** bouclé  
**YETI** chenille

**M Medium Use**  
 robust and durable, easy to maintain

**ARDA** knit fabric  
**BOUCLÉ** bouclé  
**CLUNIS** bouclé  
**DRIPPING** velvet  
**FUZZY** bouclé  
**ORSETTO** bouclé  
**ZAMPOGNA** bouclé

**H Heavy Use**  
 high technical values, very robust and durable

**ZANZIBAR** velvet

BOUCLÉS



**M BOUCLÉ**

**Typology:** bouclé  
**Composition:** 47% polyester, 44% cotton, 1% elastomer, 8% other fibers  
**Height:** approx. 140 cm  
**Weight:** 570 g/sqm  
**Abrasion resistance:** 50.000 cycles  
**Pilling resistance:** 3

Hanger: **Forest Wandering** CAT. **Q**  
**147 + 148 + 149 +150**

*Check with your Moroso representative to evaluate modifications, additions and available colours. The use of customer own fabric is possible previous technical verification by the company.*



**S DASDIA**

**Typology:** bouclé  
**Composition:** 45% cotton, 16% viscose, 14% wool, 13% acrylic, 10% linen, 2% polyamide  
**Height:** appr. 140 cm  
**Abrasion resistance:** 35.000 cycles

Hanger: **Toppings** CAT. **S**  
**154 + 155**

*Check with your Moroso representative to evaluate modifications, additions and available colours. The use of customer own fabric is possible previous technical verification by the company.*



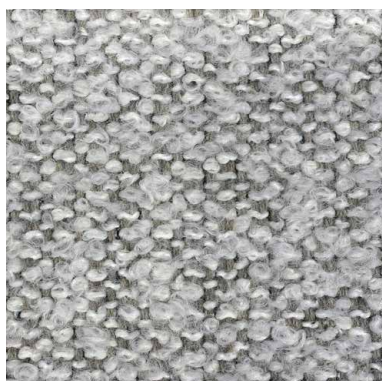
**M ORSETTO**

**Typology:** bouclé  
**Composition:** 34% viscose, 33% acrylic, 17% new wool, 8% polyester, 4% linen, 4% cotton  
**Height:** approx. 140 cm  
**Weight:** 940 g/sqm  
**Abrasion resistance:** 50.000 cycles  
**Rubbing fastness:** 5 (dry) 4 (wet)  
**Colour fastness to artificial light:** 5  
**Pilling resistance:** 4

Hanger: **Toppings** CAT. **S**  
**154 + 155**

*Check with your Moroso representative to evaluate modifications, additions and available colours. The use of customer own fabric is possible previous technical verification by the company.*

**COVERS:** Covers must be washed or cleaned according to the instructions reported on the product label. In case of stains, always contact an authorised centre.  
**DISPOSAL:** in order to respect the environment, it is recommended, at the end of the product's life, to separate the various component parts as much as possible and follow the respective recycling, recovery or disposal procedures in accordance with the regulations in force in the countries concerned.



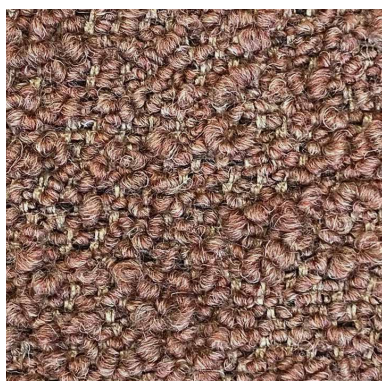
**S GORKY**

**Typology:** bouclé  
**Composition:** 37% acrylic, 23% cotton, 17% wool, 12% alpaca wool, 11% polyester  
**Height:** approx. 140 cm  
**Weight:** 625 g/sqm  
**Abrasion resistance:** 15.000 cycles  
**Pilling resistance:** 3

Hanger: **Lovewools 151**

CAT. **S**

*Check with your Moroso representative to evaluate modifications, additions and available colours.  
 The use of customer own fabric is possible previous technical verification by the company.*



**S TRONO\***

**Typology:** bouclé  
**Composition:** 37% viscose, 20% acrylic, 20% new wool, 15% polyester, 5% linen, 3% elasthan  
**Height:** approx. 140 cm  
**Weight:** 750 g/sqm  
**Abrasion resistance:** 25.000 cycles  
**Rubbing fastness:** 4-5 (dry) 4 (wet)  
**Colour fastness to artificial light:** 5  
**Pilling resistance:** 4

Hanger: **Forest Wandering 147 + 148 + 149 +150**

CAT. **W**

*Check with your Moroso representative to evaluate modifications, additions and available colours.  
 The use of customer own fabric is possible previous technical verification by the company.*

.....  
*\*In the same hanger it is possible to use also the Zampogna fabrics.*



**M FUZZY**

**Typology:** bouclé  
**Composition:** 48% viscose, 36% wool, 13% cotton, 3% polyamide  
**Height:** appr. 140 cm  
**Weight:** 550 g/sqm  
**Abrasion resistance:** 40.000 cycles  
**Colour fastness to artificial light:** 6  
**Pilling resistance:** 4-5

Hanger: **Toppings 154 + 155**

CAT. **W**

*Check with your Moroso representative to evaluate modifications, additions and available colours.  
 The use of customer own fabric is possible previous technical verification by the company.*



**M CLUNIS**

**Typology:** bouclé  
**Composition:** 33% wool, 25% acrylic, 25% polyester, 15% cotton, 2% polyamide  
**Height:** appr. 137 cm  
**Abrasion resistance:** 40.000 cycles

Hanger: **Toppings 154 + 155**

CAT. **Y**

*Check with your Moroso representative to evaluate modifications, additions and available colours.  
 The use of customer own fabric is possible previous technical verification by the company.*

.....  
**COVERS:** Covers must be washed or cleaned according to the instructions reported on the product label. In case of stains, always contact an authorised centre.  
**DISPOSAL:** in order to respect the environment, it is recommended, at the end of the product's life, to separate the various component parts as much as possible and follow the respective recycling, recovery or disposal procedures in accordance with the regulations in force in the countries concerned.

CHENILLES

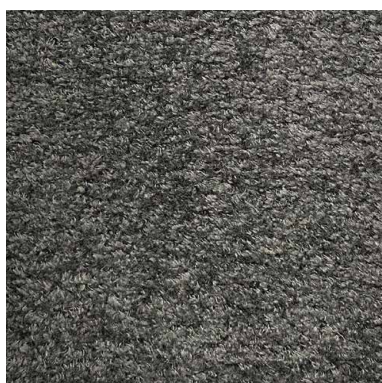


**S** YETI

**Typology:** chenille  
**Composition:** 44% viscose, 32% cotton, 19% linen, 5% polyester  
**Height:** approx. 140 cm  
**Weight:** 772 g/sqm  
**Abrasion resistance:** 30.000 cycles  
**Rubbing fastness:** 5 (dry)  
**Colour fastness to artificial light:** 4  
**Pilling resistance:** 3-4

Hanger: **Velvets and Furs 153** CAT. **S**

*Check with your Moroso representative to evaluate modifications, additions and available colours.  
 The use of customer own fabric is possible previous technical verification by the company.*



**S** SAMOIEDO

**Typology:** chenille  
**Composition:** 51% viscose, 26% cotton, 23% linen  
**Height:** approx. 140 cm  
**Weight:** 990 g/sqm  
**Abrasion resistance:** 25.000 cycles

Hanger: **Velvets and Furs 153** CAT. **W**

*Check with your Moroso representative to evaluate modifications, additions and available colours.  
 The use of customer own fabric is possible previous technical verification by the company.*



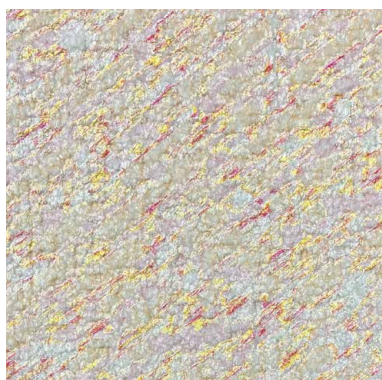
**S** FURY\*\*

**Typology:** chenille  
**Composition:** 51% viscose, 40% cotton, 8% linen  
**Height:** approx. 140 cm  
**Weight:** 550 g/sqm  
**Abrasion resistance:** 30.000 cycles  
**Rubbing fastness:** 4-5(dry) 4 (wet)  
**Colour fastness to artificial light:** 6  
**Pilling resistance:** 4-5

Hanger: **Toppings 154** CAT. **W**

*Check with your Moroso representative to evaluate modifications, additions and available colours.  
 The use of customer own fabric is possible previous technical verification by the company.*

.....  
*\*\*In the same hanger it is possible to use also the Lhati fabrics.*



**S** DRIPPING

**Typology:** chenille with 3D printing  
**Composition:** 40% cotton, 20% acrylic, 16% linen, 12% viscose, 8% wool, 4% polyester  
**Height:** approx. 120 cm  
**Weight:** 480 g/sqm  
**Abrasion resistance:** 14.000 cycles

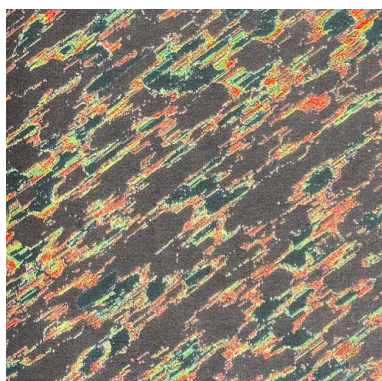
Hanger: **Toppings 155** CAT. **Y**

*Check with your Moroso representative to evaluate modifications, additions and available colours.  
 The use of customer own fabric is possible previous technical verification by the company.*

**COVERS:** Covers must be washed or cleaned according to the instructions reported on the product label. In case of stains, always contact an authorised centre.

**DISPOSAL:** in order to respect the environment, it is recommended, at the end of the product's life, to separate the various component parts as much as possible and follow the respective recycling, recovery or disposal procedures in accordance with the regulations in force in the countries concerned.

VELVETS



**M** DRIPPING

**Typology:** velvet with 3D printing  
**Composition:** 66% cotton, 31% viscose, 3% polyester  
**Height:** approx. 135 cm  
**Weight:** 315 g/sqm  
**Abrasion resistance:** 40.000 cycles

Hanger: **Velvets and Furs 152** CAT. **Y**

*Check with your Moroso representative to evaluate modifications, additions and available colours.  
 The use of customer own fabric is possible previous technical verification by the company.*



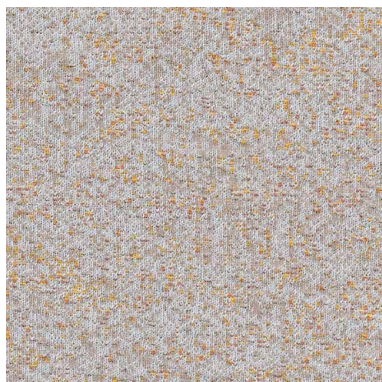
**H** ZANZIBAR

**Typology:** velvet  
**Composition:** 100% mohair (base: cotton)  
**Height:** approx. 140 cm  
**Weight:** 575 g/sqm  
**Abrasion resistance:** 80.000 cycles  
**Rubbing fastness:** 4-5 (dry) 4-5 (wet)  
**Colour fastness to artificial light:** 5  
**Pilling resistance:** 4-5

Hanger: **Velvets and Furs 152** CAT. **Z**

*Check with your Moroso representative to evaluate modifications, additions and available colours.  
 The use of customer own fabric is possible previous technical verification by the company.*

KNITTED FABRICS



**M** ARDA

**Typology:** jacquard elastic knit  
**Composition:** 70% new wool, 21% polyester, 9% nylon  
**Height:** approx. 140 cm  
**Weight:** 560 g/sqm  
**Abrasion resistance:** 50.000 cycles  
**Rubbing fastness:** 4-5 (dry) 4 (wet)  
**Colour fastness to artificial light:** 5-6  
**Pilling resistance:** 4-5

Hanger: **Forest Wandering 147 + 148 + 149 +150** CAT. **Z**

*Check with your Moroso representative to evaluate modifications, additions and available colours.  
 The use of customer own fabric is possible previous technical verification by the company.*

PELUCHE



**S** FERAL

**Typology:** peluche  
**Composition:** 36% acrylic, 28% cotton, 14% mohair wool, 14% wool, 8% polyamide  
**Height:** appr. 155 cm  
**Weight:** 730 g/sqm  
**Abrasion resistance:** 32.000 cycles  
**Color fastness to dry cleaning:** A (EN 14465)  
**Pilling resistance:** 3-4

Hanger: **Velvets and Furs 153** CAT. **Z**

*Check with your Moroso representative to evaluate modifications, additions and available colours.  
 The use of customer own fabric is possible previous technical verification by the company.*

**COVERS:** Covers must be washed or cleaned according to the instructions reported on the product label. In case of stains, always contact an authorised centre.  
**DISPOSAL:** in order to respect the environment, it is recommended, at the end of the product's life, to separate the various component parts as much as possible and follow the respective recycling, recovery or disposal procedures in accordance with the regulations in force in the countries concerned.

Moroso Spa  
via Nazionale 60  
33010 Cavalicco,  
UD - Italy  
T +39 0432 577 111  
[info@moroso.it](mailto:info@moroso.it)

