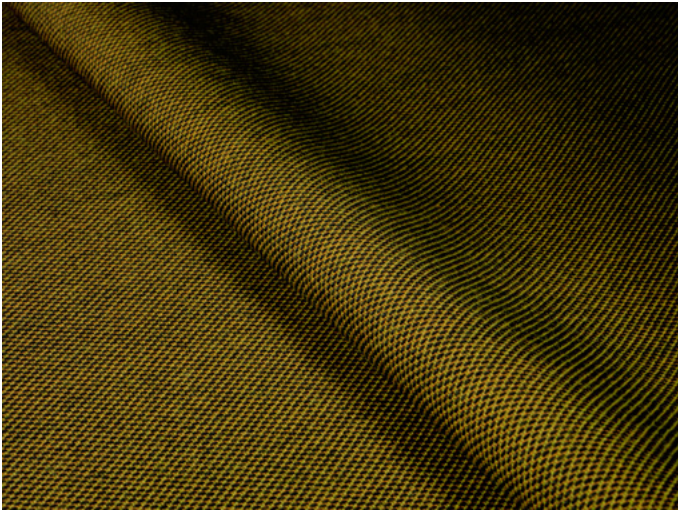


Steelcut Trio 2

kvadrat



Steelcut Trio 2

90% new wool, 10% nylon

49 colours

140 cm wide

Design: Frans Dijkmeijer and Giulio Ridolfo

Steelcut Trio 2

Steelcut Trio 2 is a hardwearing upholstery textile, which has the same construction as *Steelcut 2*. Designed by Frans Dijkmeijer and coloured by Giulio Ridolfo, it is now available in a wider choice of colours.

Like *Steelcut 2*, *Steelcut Trio 2* features an innovative weave, which gives the fabric a three-dimensional surface resembling small pyramids or steel points and, despite the complexity of the weave, a simple and precise expression.

The difference between *Steelcut Trio 2* and *Steelcut 2* lies in the way they are coloured. Unlike *Steelcut 2*, *Steelcut Trio 2* is yarn-dyed and made from 3 differently coloured yarns, often with very bright tones on the warp and lighter tones on the weft. This combination not only accentuates the three dimensional character of the weave, it also adds life to the fabric: though it looks unicoloured from a distance, different shades are revealed as the viewer gets nearer.

The colour scale of *Steelcut Trio 2* consists of 49 colours, 24 of which were added in 2011. Giulio Ridolfo designed these shades by exploring the complex visual effects created by working with three different coloured yarns.

The new palette explores *'the beauty and intensity'* of the fabric, and includes fresh whites, neutral skin tones, glassy light blues, terracotta, clay, dark indigos and unpredictable blacks. Giulio Ridolfo: *'I concentrated on the most "iridescent" aspects of light, as I was looking for a rainbow effect. I paid particular attention to making every colour nuance vibrant.'*

Tricoloured *Steelcut Trio 2* combines well with unicoloured *Steelcut 2*. For example, upholstering a chair with *Steelcut 2* on the seat and *Steelcut Trio* on back creates a particularly bold and contemporary look.

Acclaimed Dutch designer Frans Dijkmeijer is considered one of Europe's foremost designers of woven textiles. He is famed for his ability to create textiles that exude simplicity and elegance despite the high technical complexity of their weave.

Giulio Ridolfo has many years experience as a textile advisor to the clothing, footwear and interiors industries. His working method has been compared to a patchwork quilt, where he gathers and juxtaposes small fragments of real life in the form of images, colours, patterns and textures. He strives to retain the *'colour vibes'* by adapting them into usable colour palettes without losing their original vibrant characteristics.

For further information
www.kvadrat.dk